



Málm- og véltækniönaður "Grænland og fleira gott"

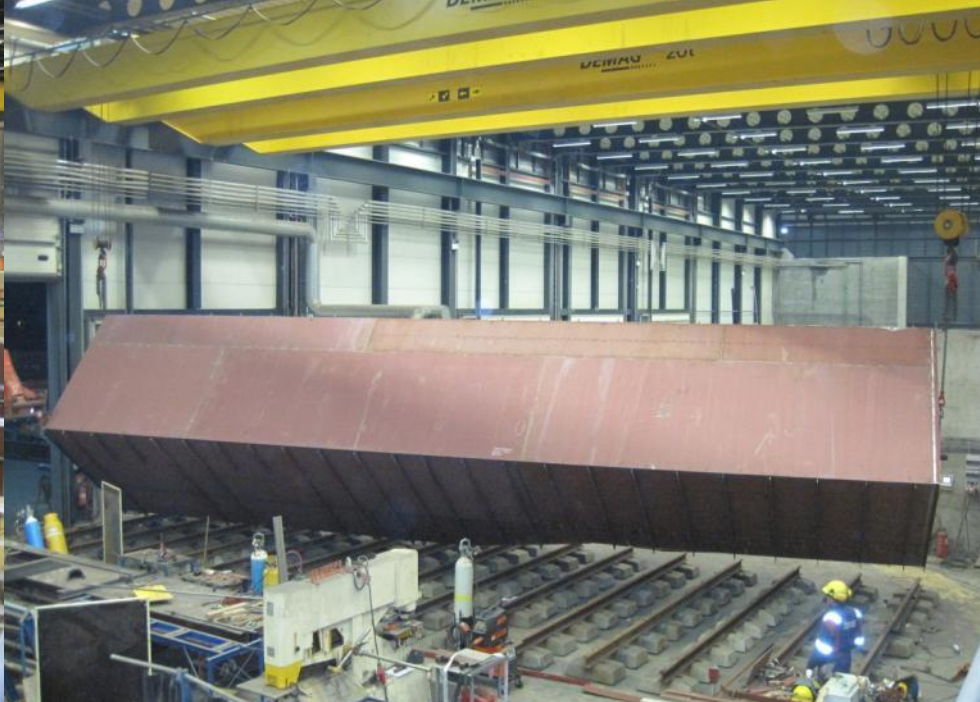
28. febrúar 2013



ÍSTAK



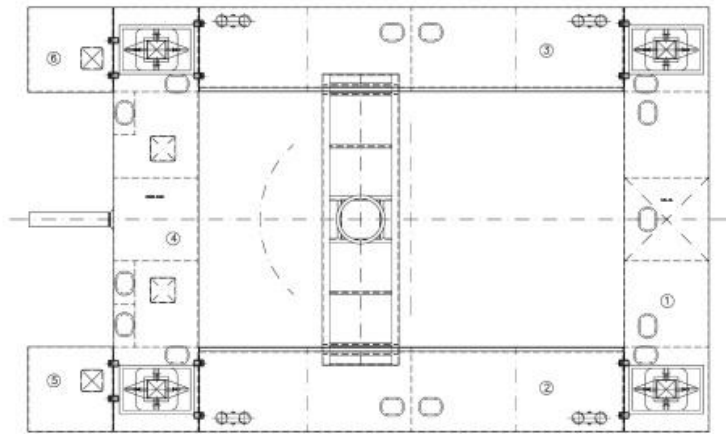
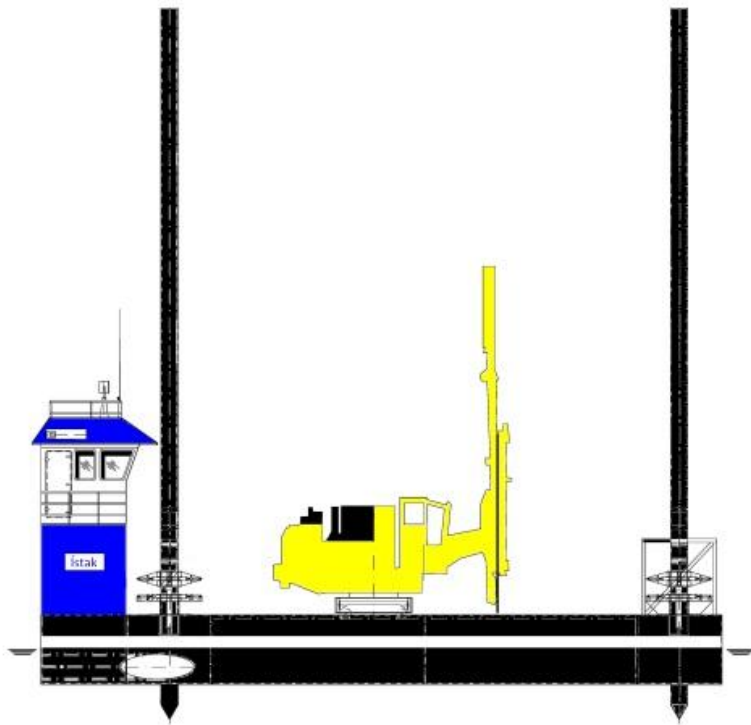
Stálsmiði



Skipasmíði



ÍSTAK

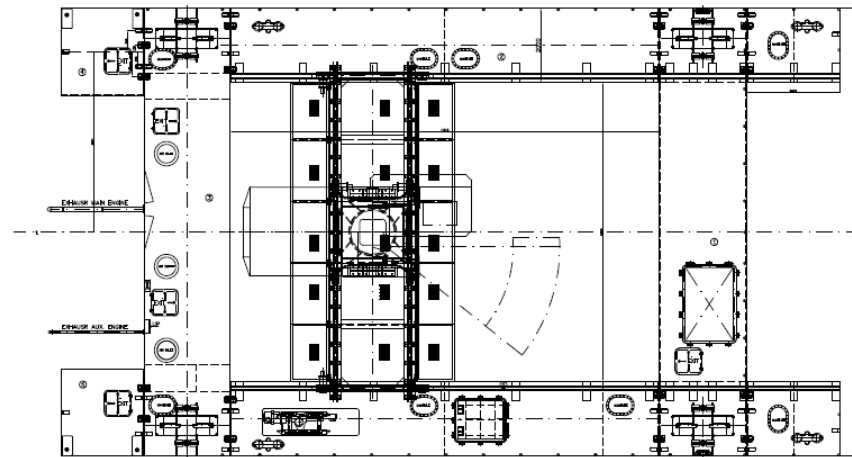
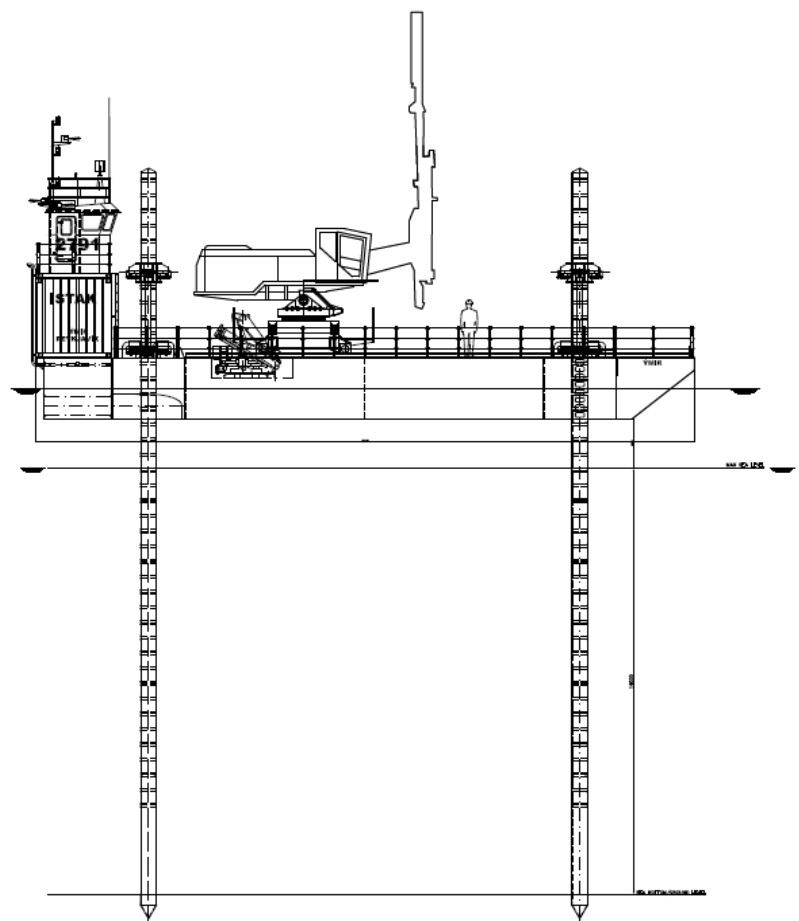


MAN DECK

MAIN DIMENSIONS:

LENGTH 18.00 m
 WIDTH 12.00 m
 DEPTH 2.00 m
 LEFT DRP WIDTH 8.00 m
 RIGHT DRP WIDTH 8.00 m
 DRP SPACING 2.00 m
 DRP CENTER TO CENTER 10.00 m
 DRP CENTER TO CENTER 10.00 m
 DRP CENTER TO CENTER 10.00 m

		021-52000000 021-52000001 021-52000002 021-52000003 021-52000004 021-52000005 021-52000006 021-52000007 021-52000008 021-52000009 021-52000010 021-52000011 021-52000012 021-52000013 021-52000014 021-52000015 021-52000016 021-52000017 021-52000018 021-52000019 021-52000020 021-52000021 021-52000022 021-52000023 021-52000024 021-52000025 021-52000026 021-52000027 021-52000028 021-52000029 021-52000030 021-52000031 021-52000032 021-52000033 021-52000034 021-52000035 021-52000036 021-52000037 021-52000038 021-52000039 021-52000040 021-52000041 021-52000042 021-52000043 021-52000044 021-52000045 021-52000046 021-52000047 021-52000048 021-52000049 021-52000050 021-52000051 021-52000052 021-52000053 021-52000054 021-52000055 021-52000056 021-52000057 021-52000058 021-52000059 021-52000060
DRILLING BARGE PROPOSAL		021-52000000 021-52000001 021-52000002 021-52000003 021-52000004 021-52000005 021-52000006 021-52000007 021-52000008 021-52000009 021-52000010 021-52000011 021-52000012 021-52000013 021-52000014 021-52000015 021-52000016 021-52000017 021-52000018 021-52000019 021-52000020 021-52000021 021-52000022 021-52000023 021-52000024 021-52000025 021-52000026 021-52000027 021-52000028 021-52000029 021-52000030 021-52000031 021-52000032 021-52000033 021-52000034 021-52000035 021-52000036 021-52000037 021-52000038 021-52000039 021-52000040 021-52000041 021-52000042 021-52000043 021-52000044 021-52000045 021-52000046 021-52000047 021-52000048 021-52000049 021-52000050 021-52000051 021-52000052 021-52000053 021-52000054 021-52000055 021-52000056 021-52000057 021-52000058 021-52000059 021-52000060
GENERAL ARRANGEMENT SELF-SERVING PLATFORM		021-52000000 021-52000001 021-52000002 021-52000003 021-52000004 021-52000005 021-52000006 021-52000007 021-52000008 021-52000009 021-52000010 021-52000011 021-52000012 021-52000013 021-52000014 021-52000015 021-52000016 021-52000017 021-52000018 021-52000019 021-52000020 021-52000021 021-52000022 021-52000023 021-52000024 021-52000025 021-52000026 021-52000027 021-52000028 021-52000029 021-52000030 021-52000031 021-52000032 021-52000033 021-52000034 021-52000035 021-52000036 021-52000037 021-52000038 021-52000039 021-52000040 021-52000041 021-52000042 021-52000043 021-52000044 021-52000045 021-52000046 021-52000047 021-52000048 021-52000049 021-52000050 021-52000051 021-52000052 021-52000053 021-52000054 021-52000055 021-52000056 021-52000057 021-52000058 021-52000059 021-52000060



MAIN DECK







ISTAK





GREENLAND





Ellesmere Island

Fram Strait

Petermann Glacier

Thule

Northeast Ice Stream

Zacharaie Glacier

Barents Sea

Baffin Bay

Greenland

Jakobshavn Glacier

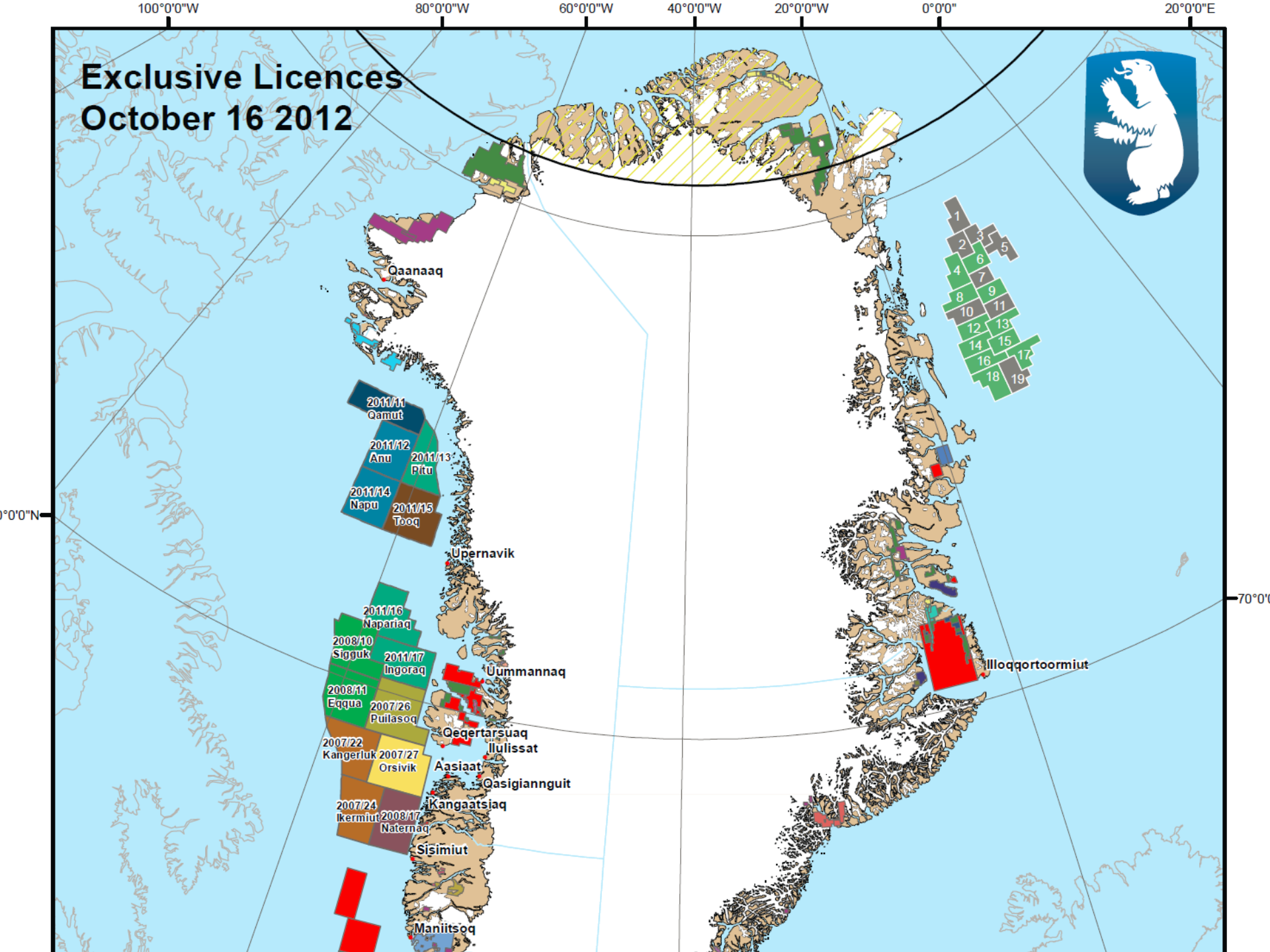
Kangerlussuaq

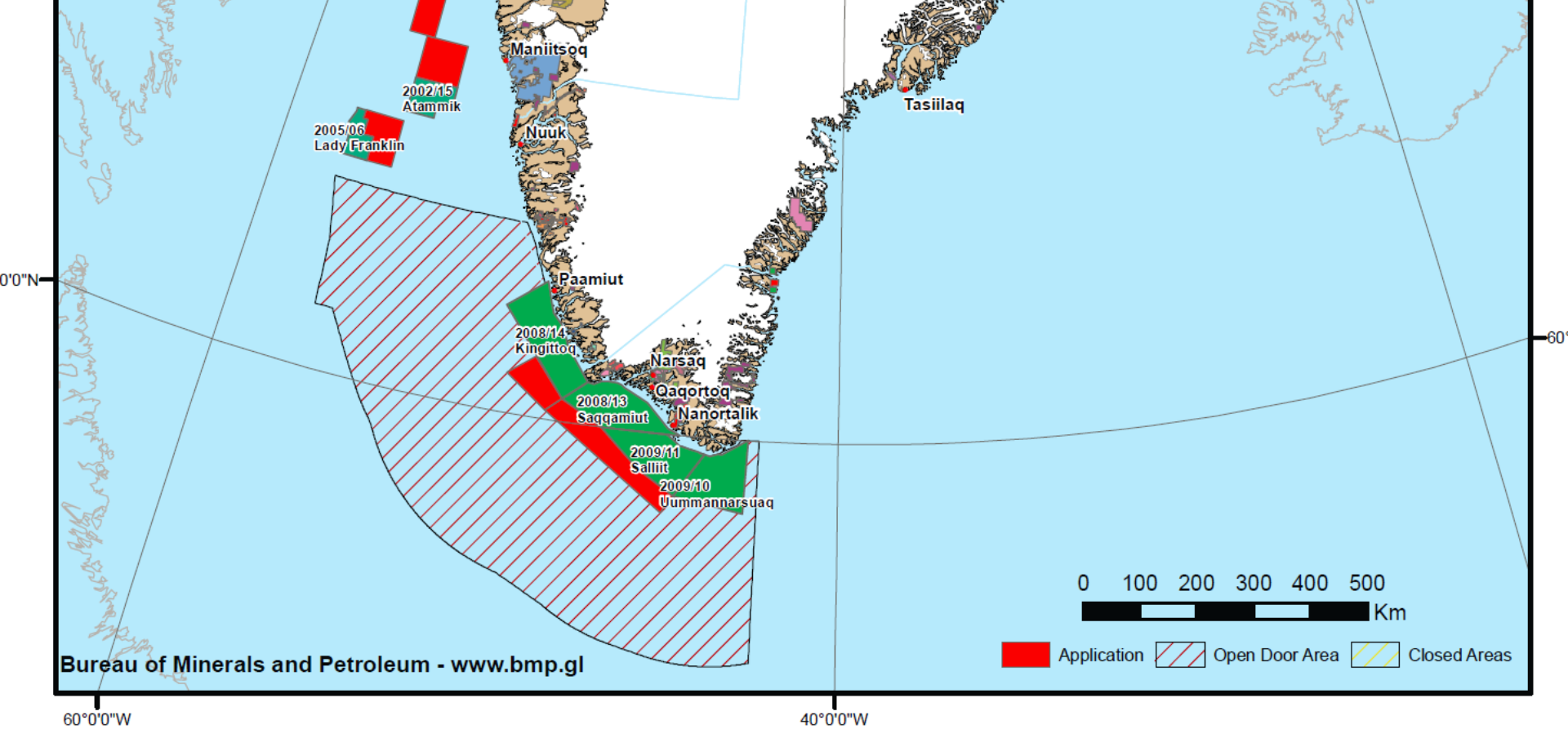
Kangerdlugssuaq Glacier

Helheim Glacier



Exclusive Licences October 16 2012





Bureau of Minerals and Petroleum - www.bmp.gl

Exclusive Hydrocarbon Licences

- Cairn Energy, NUNAOIL
- Cairn Energy, Petronas, NUNAOIL
- ConocoPhillips, DONG Energy, NUNAOIL
- DONG Energy, ExxonMobil, Chevron, NUNAOIL
- Husky Oil, ExxonMobil, NUNAOIL
- Husky Oil, NUNAOIL
- Maersk Oil, NUNAOIL
- PA Resources AB, NUNAOIL
- Shell, Statoil, GDF Suez, NUNAOIL

Greenland Sea Licensing Round

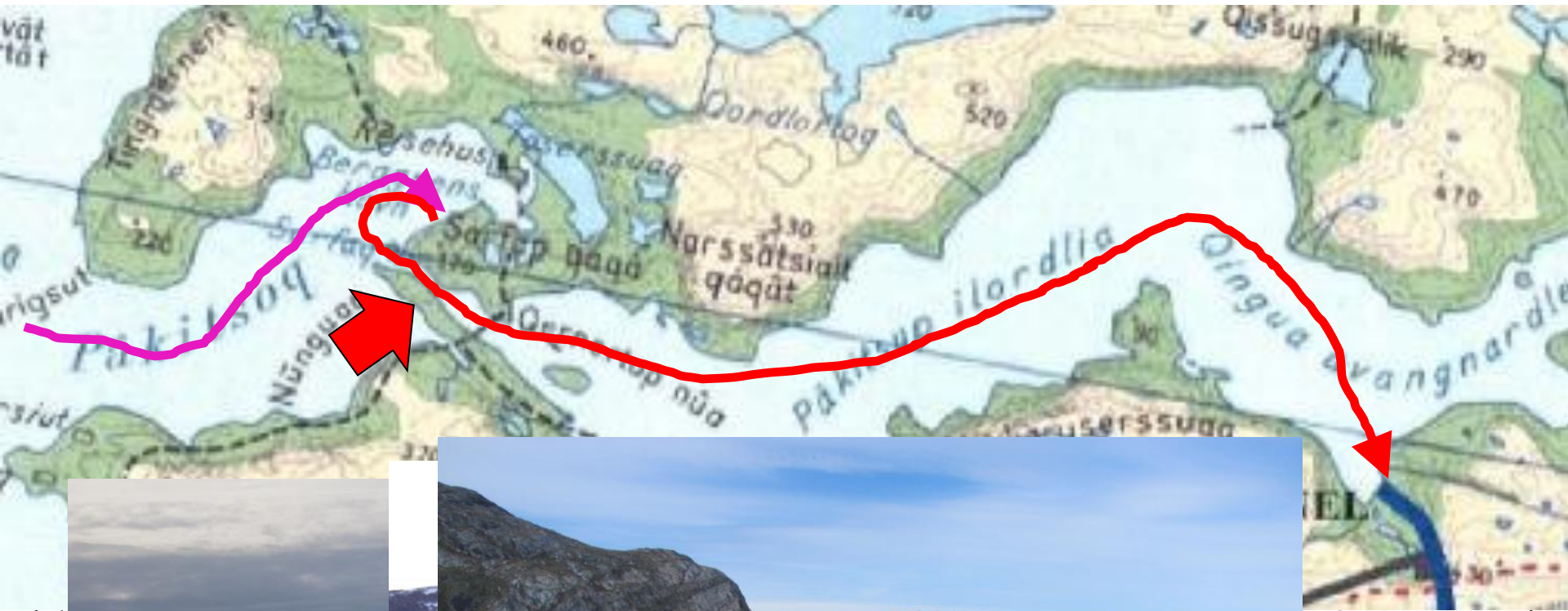
- Pre Licensing Round
- Ordinary Licensing Round

Exclusive Mineral Licences

- 21st North
- Angel Mining (Gold)
- Angel Mining PLC
- Avannaa Exploration
- Bedford (No.3)
- Black Angel Mining
- CGRG
- East Coast Minerals (Australia)
- Greenland Gold Resources
- Greenland Minerals & Energy
- Greenland Resources
- Hudson Resources

- Hunter Minerals
- Ironbark Zinc
- London Mining Greenland
- Malmbjerg Molybdenum
- Minelco
- NAMA Coal
- NAMA Greenland
- Nordic Mining
- North American Nickel
- North Star Minerals
- NunaMinerals
- Pinnacle Nominees

- Platina Resources
- Plymouth Minerals
- Power Resources
- RAM Resources
- Rare Earths Minerals No. 2
- Rimbal
- Sirius Minerals
- Talbot Group Investments
- Tanbreez Mining Greenland
- True North Gems
- West Melville Metals



4 6 8 10 km

Rev.	Dato	Ending	Des.	Ktr.	Gk.

ÍSTAK
 Skopulví 3, B-165 Pósthúsið, Sanddalshúsið - Síðilíki - Síðilíki - Síðilíki
 Síðilíki - Síðilíki - Síðilíki - Síðilíki - Síðilíki - Síðilíki - Síðilíki - Síðilíki

Vandkraftværk ved Ilulissat

OVERSIGTSPLAN

KKS Númerning	Plac	Staðir	Leiðing

VERKÍS Arktis A/S
 Síðilíki - Síðilíki - Síðilíki - Síðilíki - Síðilíki - Síðilíki - Síðilíki - Síðilíki

Skala	1:100.000	Dag	2009.03.04
Útvegi	Kristján Már Sigurðsson	Skala	1:100.000
Útvegi	12/06/2010	Skala	1:100.000
Útvegi	12/06/2010	Skala	1:100.000

© 2009 by Verki Á. All rights reserved. No part of this publication may be reproduced, stored in a retrieval system, or transmitted in any form or by any means, electronic, mechanical, photocopying, recording, or by any information storage and retrieval system, without the prior written permission of Verki Á.







28/07/2010 12:52



05/12/2010



24/09/2011





01/10/2011







Takk fyrir !



ÍSTAK